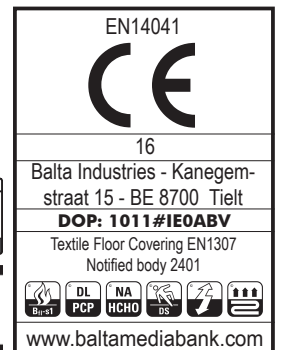
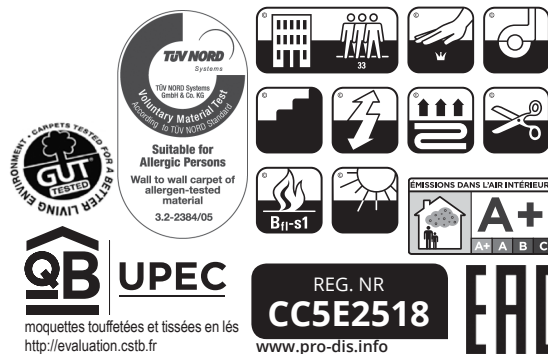
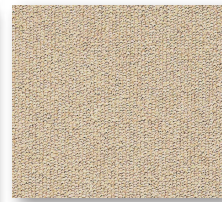


<b>CONSTRUCTION STRUCTURE STRUKTUR STRUCTUUR</b>	Tufting 1/10" loop pile Tufté 1/10" bouclé Getuftet 1/10" Schlinge Getuft 1/10" lussenpool
<b>PILE MATERIAL COMPOSITION DU VELOURS POLMATERIAL POOLMATERIAAL</b>	100% PA 6 IMPREL®
<b>PRIMARY BACKING SUPPORT TRÄGERMATERIAL TUFTDOEK</b>	Non woven PES Non woven PES Vlies PES Non woven PES
<b>SECONDARY BACKING DOSSIER RÜCKEN TAPIJTRUG</b>	Action Back
<b>PILE WEIGHT POIDS DU VELOURS POLEINSATZGEWICHT POOLGEWICHT</b>	Ca. 460 gr/m <sup>2</sup>
<b>TOTAL WEIGHT POIDS TOTAL GESAMTGEWICHT TOTAAL GEWICHT</b>	Ca. 1.530 gr/m <sup>2</sup>
<b>PILE HEIGHT EPAISSEUR DU VELOURS POLHÖHE POOLHOOGTE</b>	Ca. 3 mm
<b>TOTAL HEIGHT EPAISSEUR TOTALE GESAMTHÖHE TOTALE DIKTE</b>	Ca. 5 mm
<b>TUFT DENSITY NOMBRES DE POINTS NOPPENZAHL AANTAL PUNTEN</b>	Ca. 205 000/m <sup>2</sup>
<b>PILE DENSITY DENSITÉ DU VELOURS POLROHDICHTÉ POOLDICHTHEID</b>	Ca. 0.120 g/cm <sup>3</sup>
<b>CLASSIFICATION CLASSEMENT KLASSIFIKATION CLASSIFICATIE</b>	EN 1307 33 - LC1
<b>UPEC</b>	U3 P3 E1 C0 Certification CSTB:10/271
<b>CASTOR CHAIR SUITABILITY CHAISE À ROULETTES STUHLROLLENEIGNUNG ROLSTOELGESCHIKTHEID</b>	EN 985 A: intensive use
<b>STAIR SUITABILITY ESCALIERS TREPPENEIGNUNG TRAPPENGESCHIKTHEID</b>	EN 1963 A: intensive use

<b>PERMANENTLY ANTISTATIC ANTISTATIQUE PERMANENT PERMANENT ANTISTATISCH PERMANENT ANTISTATISCH</b>	ISO 6356 < 2 kV
<b>IMPACT NOISE RATING ISOLATION PHONIQUE TRITTSCHALLVERBESSERUNG GELUIDSISOLATIE</b>	ISO 140-8 21 dB ΔLw
<b>SOUND ABSORPTION ABSORPTION PHONIQUE SCHALLABSORPTIONSGRAD GELUIDSABSORPTIE</b>	ISO 354 0.15 αw
<b>THERMAL RESISTANCE RÉSISTANCE THERMIQUE WÄRMEDURCHLASSWIDERSTAND WARMTEDOORLAATWEERSTAND</b>	ISO 8302 0.06 m <sup>2</sup> K/W
<b>FASTNESS TO LIGHT SOLIDITÉ A LA LUMIÈRE LICHTECHTHEIT LICHTECHTHEID</b>	ISO 105-B02 ≥ 5-6
<b>COLOUR FASTNESS TO WATER SOLIDITÉ À L'EAU WASSERECHEIT WATERECHEID</b>	EN ISO 105-E01 ≥ 4-5
<b>FIRE RESISTANCE COMPORTEMENT AU FEU BRENNVERHALTEN BRANDGEDRAG</b>	EN 13501-1 Bfl-s1 (if glued)
<b>RUBBING FASTNESS SOLIDITÉ AU FROTTEMENT REIBECHTHEIT WRIJFECHTHEID</b>	EN ISO 105-X12 ≥ 4
<b>NUMBER OF COLOURS NOMBRES DE COULEURS ANZAHL FARBEN AANTAL KLEUREN</b>	26
<b>WIDTH LARGEUR BREITE BREEDTE</b>	EN ISO 3018 ca. 400 cm



# master AB



▲ 37



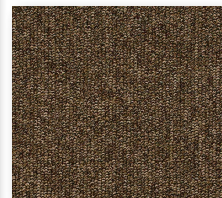
▲ 33



▲ 45



▲ 36



▲ 44



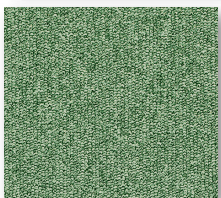
▲ 194



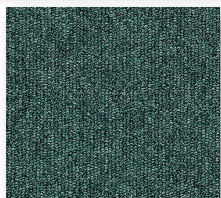
▲ 880



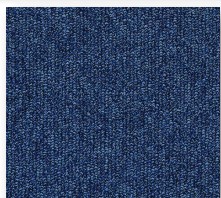
▲ 198



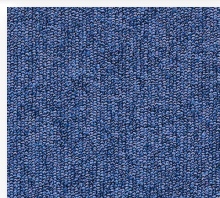
▲ 27



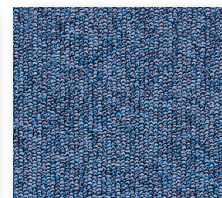
▲ 490



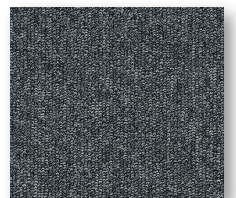
▲ 370



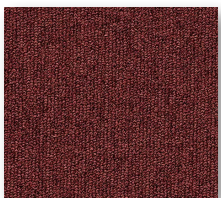
▲ 76



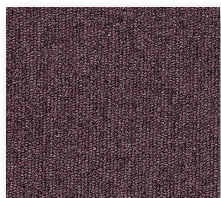
▲ 350



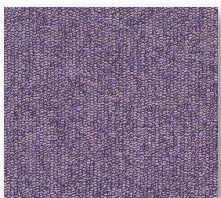
▲ 297



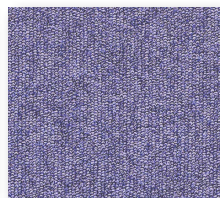
▲ 116



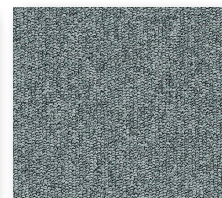
▲ 19



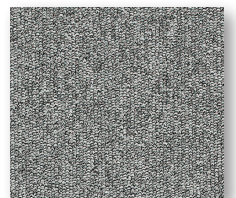
▲ 85



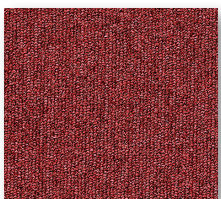
▲ 87



▲ 960



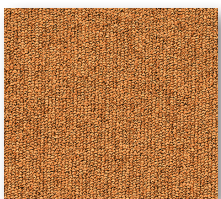
▲ 196



▲ 11



▲ 66



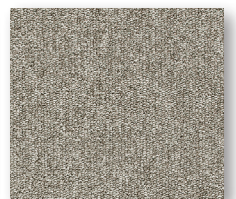
▲ 55



▲ 52



▲ 900



▲ 950